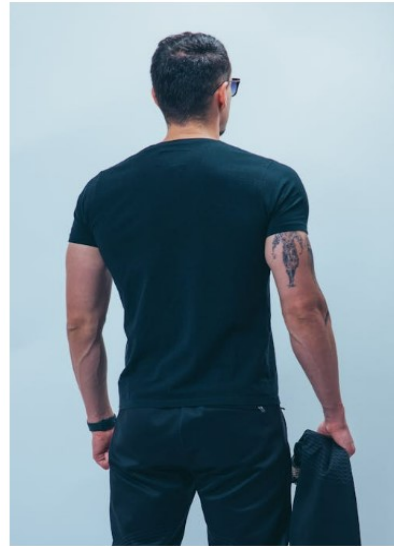


This one was fun. I started out with this [amazing photo](#)¹ of a wilderness road in Virginia (which trees unfortunately don't match the Abbey Lands) then put our [model](#) for Aleph² (below) in [this](#) authentic suit of armor.³ Aleph's arms came from [this](#) model,⁴ and I acquired Aleph's hair [here](#).⁵ Efran was pretty much an afterthought, but I did eventually find [this hunk](#).⁶ As you can see from his photo (also below), I had to airbrush out the tattoo--most of it, anyway--but at least Efran's hair covered the sunglasses.



Robin Hardy
May 3, 2024

PS. I am not claiming copyright on this illustration.

1. Photographed by [ForestWander](#) on Wikimedia Commons
2. Photographed by [Rulo Davila](#) on Pexels
3. It's Pikeman's armor, circa 1620-30, at the Metropolitan Museum of Art, via Wikimedia Commons.
4. Photographed by [Mart Production](#) on Pexels
5. On Wallpapers.com
6. Photographed by [Raša St](#) on Pexels